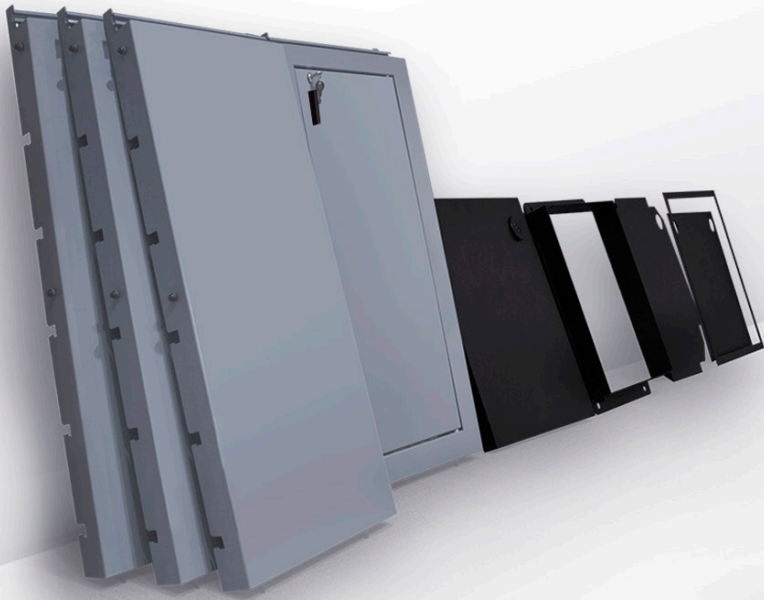


konnnect



Tool-free Counter System

Sets Up In **2 minutes**

Holds Up To **400 lbs**

Packs Easily Into
Roto-Molded Case



SETS UP IN 2 MINUTES

Fabricated from sheet aluminum, Agam's lightweight, knock-down **Konnect Counter System** sets up fast and easy and holds up to 400 lbs! Simply lock each of the four sides into the base using the clips, insert shelving and secure counter top in place.

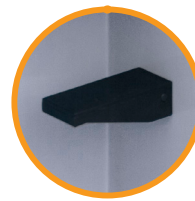


DOUBLE
23" x 46" x 39.5" h

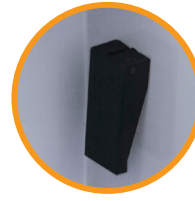
FULL CUSTOMIZATION

Help your clients stand out with a custom branded counter. First, choose your configuration. Next, choose your paint and countertop finishes. Accessorize with charging ports, tablet holders, graphics, accent lights + more!

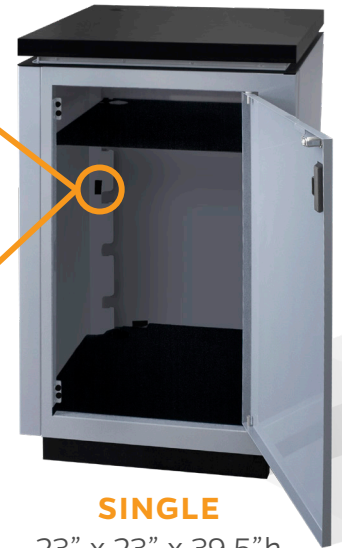
Unique Locking Clips



UNLOCKED



LOCKED



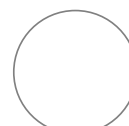
SINGLE
23" x 23" x 39.5" h



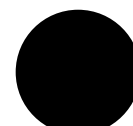
**KONNECT LE
(LEG EXTENSION)**
23" x 46" x 39.5" h



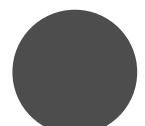
STANDARD PAINT AND COUNTERTOP FINISHES



WHITE



BLACK



GRAY